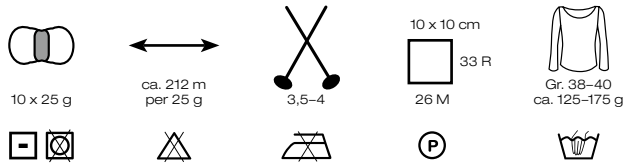


## SETASURI Art. 1295

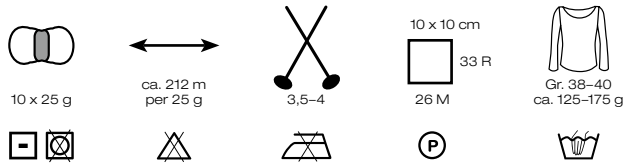
69 % Alpaka (Suri), Alpaca (Suri)  
31 % Seide, Silk



\* NEU/NEW

## SETASURI Art. 1295

69 % Alpaka (Suri), Alpaka (Suri)  
31 % Seide, Silk



\* NEU/NEW

# LANA GROSSA

## SETASURI Art. 1295

69 % Alpaca (Suri), Alpaca (Suri)  
31 % Seide, Silk



10 x 25 g



ca. 212 m  
per 25 g



3,5-4



26 M



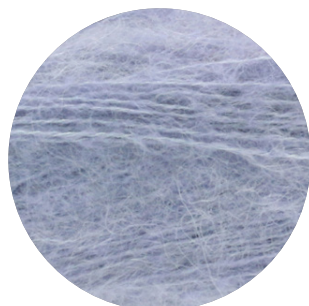
Gr. 38-40  
ca. 125-175 g



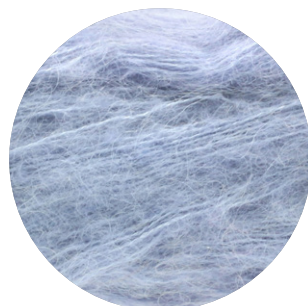
53



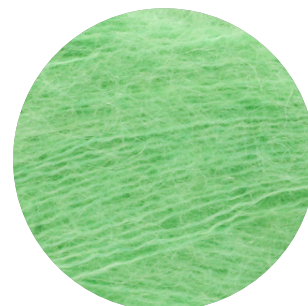
45



27



42



51



61



55



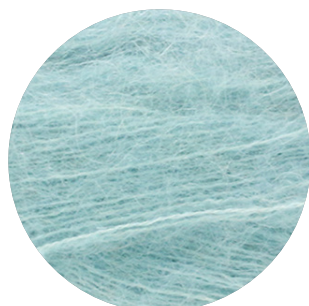
35



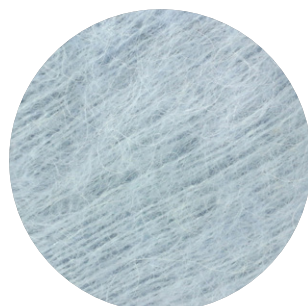
28



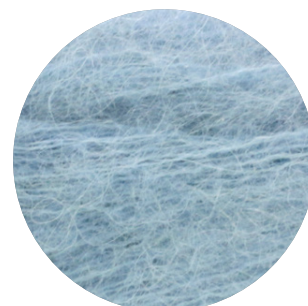
43



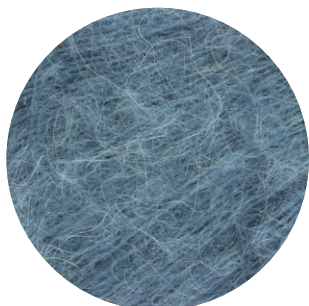
14



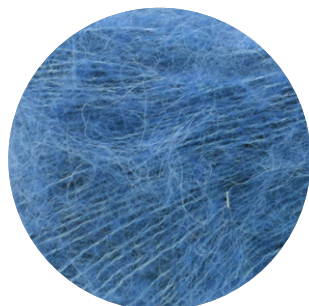
44



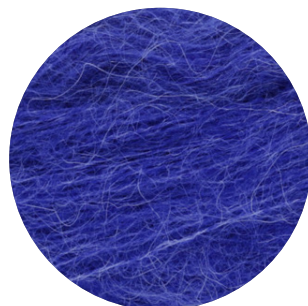
13



37



54



36



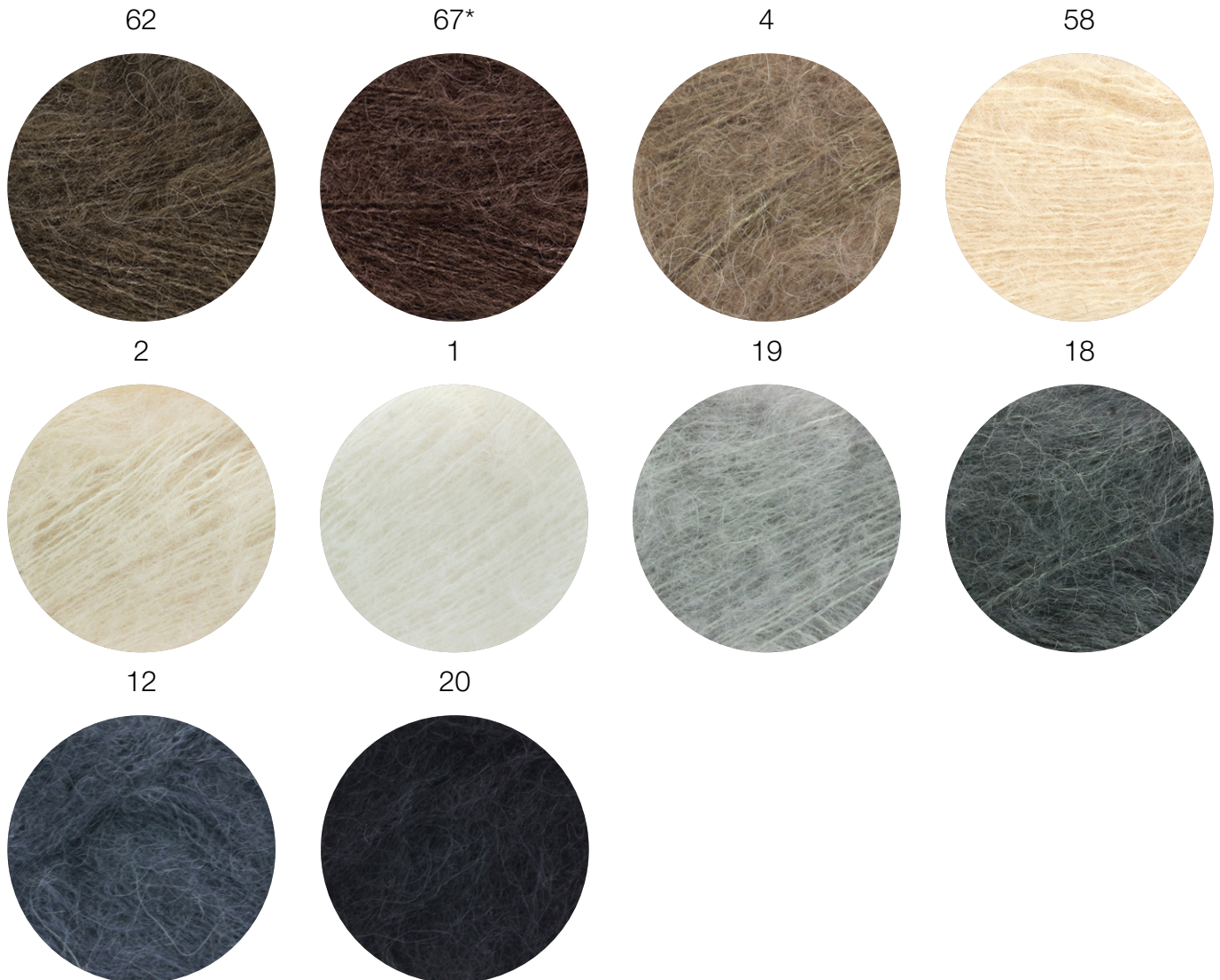
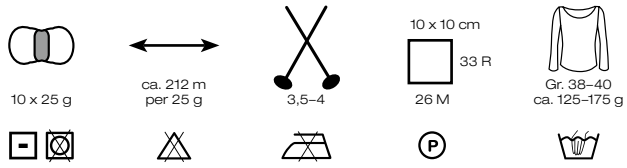
\* NEU/NEW

LANA GROSSA GmbH

Ingolstädter Straße 86 · 85080 Gaimersheim · Tel. +49 (0)8458 61-0 · Fax +49 (0)8458 61-36 · www.lana-grossa.de

## SETASURI Art. 1295

69 % Alpaka (Suri), Alpaca (Suri)  
31 % Seide, Silk



\* NEU/NEW

**LANA GROSSA GmbH**

Ingolstädter Straße 86 · 85080 Gaimersheim · Tel. +49 (0)8458 61-0 · Fax +49 (0)8458 61-36 · [www.lana-grossa.de](http://www.lana-grossa.de)