

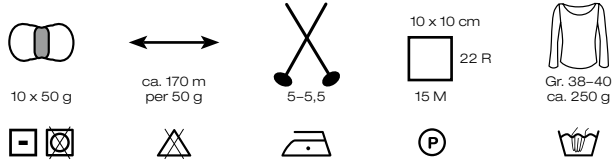
# LANA GROSSA

**AIRY** Art. 1168

42 % Alpaka (Baby), Alpaca (Baby)

40 % Baumwolle, Cotton

18 % Schurwolle (Merino extrafine), Virgin Wool (Merino extrafine)



1



5



9



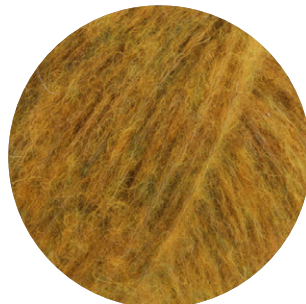
13



2



6



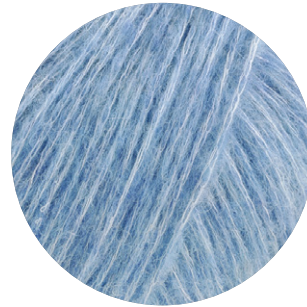
10



14



3



7



11



15



4



8



12



16



**LANA GROSSA GmbH**

Ingolstädter Straße 86 · 85080 Gaimersheim · Tel. +49 (0)8458 61-0 · Fax +49 (0)8458 61-36 · [www.lana-grossa.de](http://www.lana-grossa.de)

# LANA GROSSA

**AIRY** Art. 1168

42 % Alpaka (Baby), Alpaca (Baby)

40 % Baumwolle, Cotton

18 % Schurwolle (Merino extrafine), Virgin Wool (Merino extrafine)



10 x 50 g



ca. 170 m  
per 50 g



5-5,5

10 x 10 cm



15 M



Gr. 38-40  
ca. 250 g



17

