



© Lana Grossa GmbH

Design 7 – Flyer Confetti

LONG JACKET CONFETTI

LONG JACKET · CONFETTI

Design 7 – Flyer Confetti



Size 36 – 40 (42 – 46)

Instructions are given for smaller size. Figure in parenthesis refers to larger size. When only one figure is given, it applies to both sizes.

Materials: 1000 (1100) g of Lana Grossa **Confetti** (100% Merino wool; 50 m/100 g) in Off White/Grey/Umbra/Black (col 8). Size 12 mm needles.

Gauge: 7 sts and 10 rows = 10 x 10 cm in St st on size 12 mm needles.

Gartr st: K every row.

St st: K on RS, p on WS.

Main patt: Rows 1 – 7: Work in St st. **Row 8 (WS):** Knit all sts. Rep rows 1 – 8 for main patt.

Two-stitch selvage: On every row, sl first st pwise wyif, k 2nd st.

Selvage sts: K on RS, p on WS.

Full-fashion decrease: At beg of RS row, two-stitch selvage, k1, k2tog; at end of RS row, work to last 5 sts, skp, k1, two-stitch selvage.

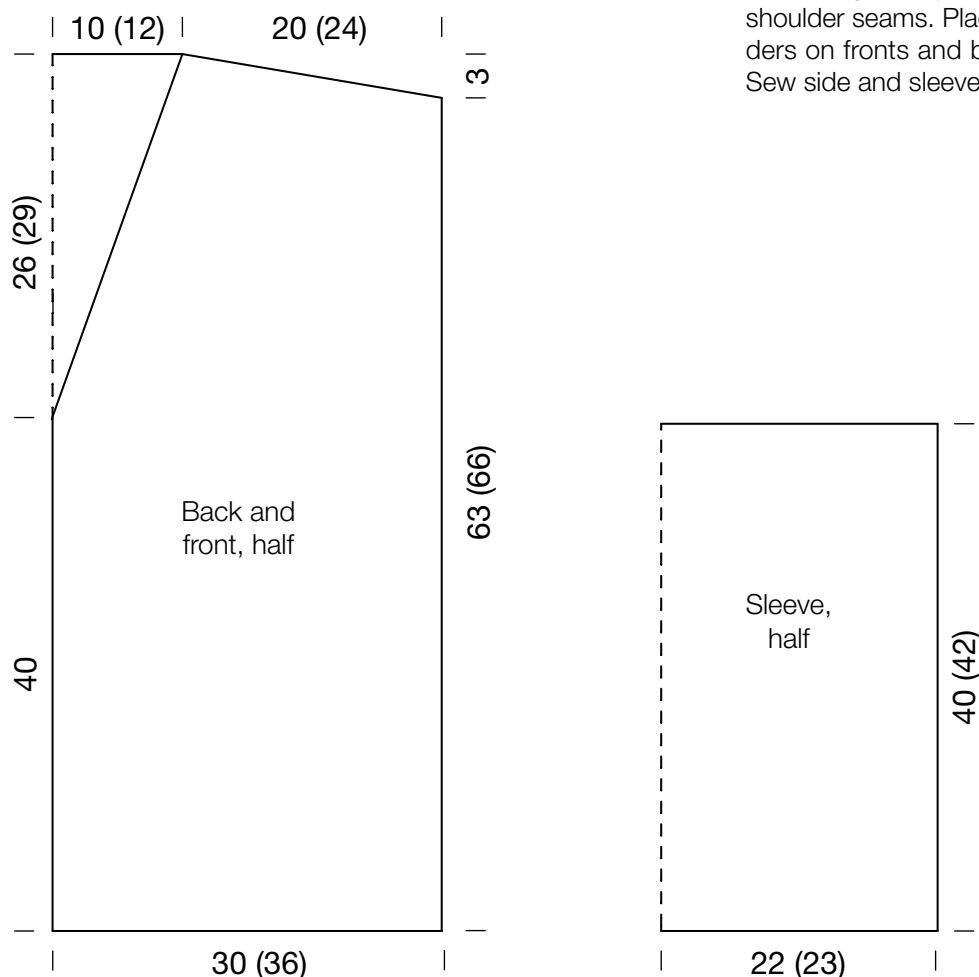
Back: Cast on 44 (50) sts. Working first and last st as selvage sts, k 1 WS row. Maintaining selvage sts, work in main patt until piece meas 63 (66) cm from cast-on, ending with a WS row. Shape shoulders: At each shoulder edge bind off 5 sts 3 times (5 sts 1 time, 6 sts 2 times). Bind off rem 14 (16) sts.

Left front: Cast on 23 (26) sts. Working a two-stitch selvage at front edge and a selvage st at side edge, k 1 WS row. Maintaining selvage sts, work in main patt until piece meas 40 cm from cast-on, ending with a WS row. Shape neck: Working full-fashion dec, dec 1 st at end of next RS row, then every alt 4th and 2nd row 8 times and when same length as back to shoulder, shape shoulder at right edge same as for back. No sts rem.

Right front: Work same as left front, reversing all shaping and patt placement.

Sleeves: Cast on 32 (34) sts. Work in St st for 40 (42) cm. Bind off all sts.

Finishing: Pin pieces to measurements and block. Sew shoulder seams. Place markers 22 (23) cm down from shoulders on fronts and back. Sew on sleeves between markers. Sew side and sleeve seams. Carefully weave in all ends.



Gauge Swatch

Before you begin ...

...make a gauge swatch. Use the recommended needles, yarns and pattern stitch for your gauge swatch. It should measure approx. 12 cm x 12 cm. Cast-on and bind-off rows, as well as selvage stitches should not be included in the measurement. Pin your swatch and block it as you would the finished pieces of the garment. Count stitches and rows over 10 cm. If your gauge swatch is too small, switch to larger needles. If your gauge swatch is too big, switch to smaller needles.



Abbreviations

beg = begin(ning) · **ch** = chain · **cont** = continue · **dec** = decreas(e)(ing) · **inc** = increas(e)(ing) · **k** = knit · **kwise** = as if to knit
meas = measures · **M1L** = lift strand between sts from front to back and knit this strand through the back loop · **M1R** = lift strand between sts from the back and knit this strand through the front loop · **patt** = pattern · **pm** = place marker · **p** = purl
pwise = as if to purl · **rem** = remain(ing) · **rep** = repeat(s) · **rev St st** = reverse stockinette stitch · **rnd(s)** = round(s) · **RS** = right side · **sc** = single crochet · **skp** = slip 1 stitch as if to knit, knit 1 stitch, pass slipped stitch over knitted stitch · **sk2p** = slip 1 stitch as if to knit, knit 2 together, pass slipped stitch over knitted stitch · **s2kp** = slip 2 stitches as if to knit, k 1 stitch, pass slipped stitches over knitted stitch · **sl** = slip · **st(s)** = stitch(es) · **St st** = stockinette stitch · **tbl** = through the back loop · **tog** = together · **wyib** = with yarn in back of work · **wyif** = with yarn in front of work · **WS** = wrong side · **yo(s)** = yarn over(s)

Publisher's Info

Publisher: Lana Grossa GmbH, Gaimersheim, www.lana-grossa.com

Photographer: Clara Nebeling